

DARBY SUBDIVISION MINOR PLAT

SECTION 13, T38S, R40E, MARTIN COUNTY, FLORIDA
BEING THE EAST 3/4 OF TRACT 30, SECTION 13, PALM CITY FARMS PLAT BOOK 6
PAGE 42 RECORDS OF PALM BEACH COUNTY NOW MARTIN COUNTY, FLORIDA

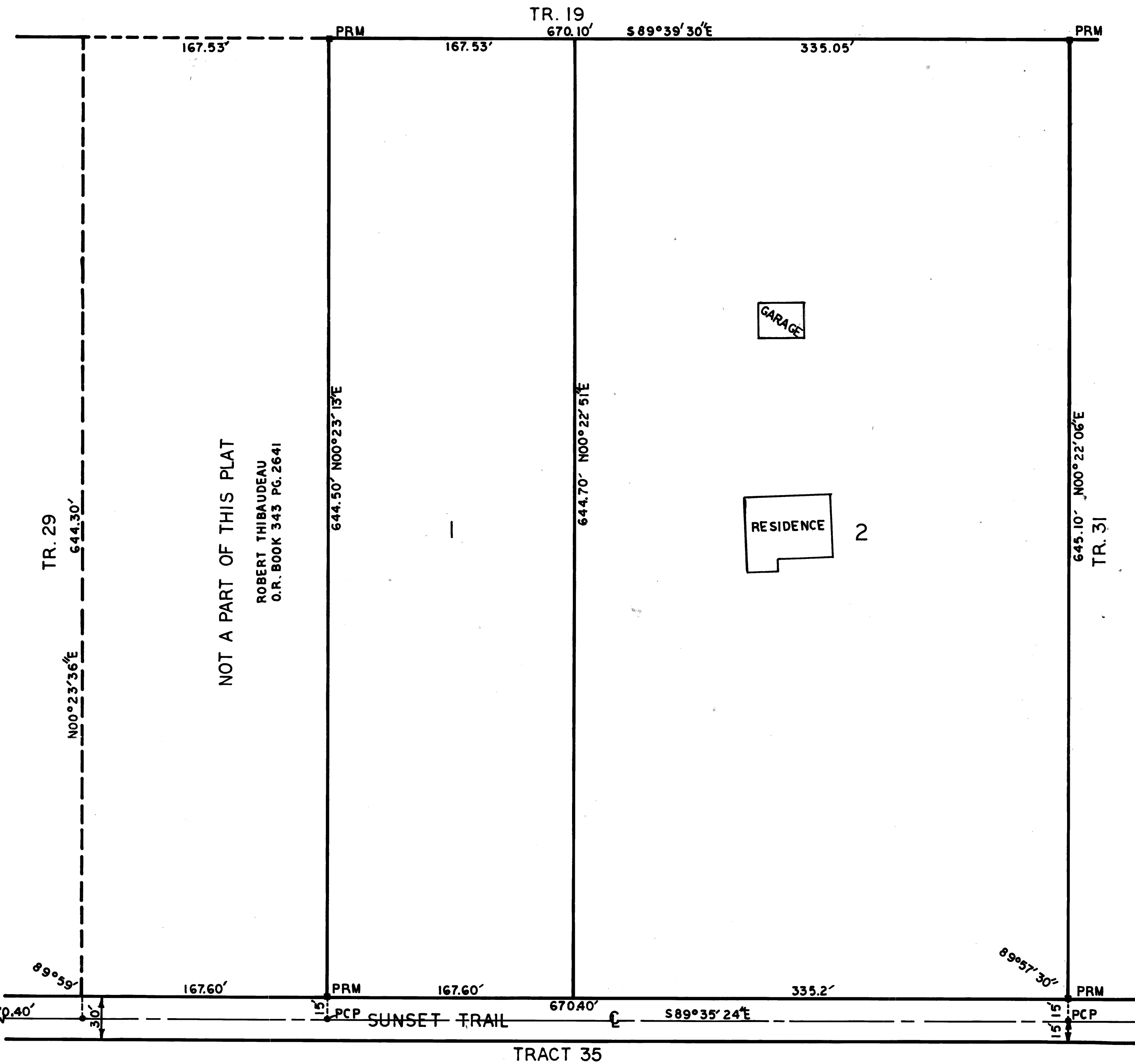
APRIL 23, 1974



SCALE: 1"=50'

FILED FOR RECORD
MARTIN COUNTY, FLA.
1974 JUN 13 AM 11:05
LOUISE V. ISAACS
CLERK OF CIRCUIT COURT

I, LOUISE V. ISAACS, CLERK OF THE CIRCUIT COURT OF MARTIN COUNTY, FLORIDA, DO HEREBY CERTIFY THAT THIS PLAT WAS FILED FOR RECORD IN PLAT BOOK 6, PAGE 48, MARTIN COUNTY, FLORIDA PUBLIC RECORDS.
LOUISE V. ISAACS, CLERK
CIRCUIT COURT
MARTIN COUNTY, FLORIDA
BY: [Signature]
DEPUTY CLERK
FILE NO. 213106



CERTIFICATE OF TITLE

STATE OF FLORIDA
COUNTY OF MARTIN
I, F. SHIELDS McMANUS, A MEMBER OF THE FLORIDA BAR, DO HEREBY CERTIFY THAT APPARENT RECORD TITLE IS IN THE PERSON OF PERSONS CORPORATION OR OTHER ENTITY WHICH EXECUTED THE CERTIFICATE OF OWNERSHIP HEREON.

F. Shields McManus
F. SHIELDS McMANUS
ATTORNEY-AT-LAW
608 COLORADO AVE.
STUART, FLORIDA

CERTIFICATION

STATE OF FLORIDA
COUNTY OF MARTIN
I, RANDELL E. FISHER, DO HEREBY CERTIFY THAT THIS PLAT OF DARBY'S SUBDIVISION MINOR PLAT IS A TRUE AND CORRECT REPRESENTATION OF THE LANDS SURVEYED, THAT SAID SURVEY WAS MADE UNDER MY SUPERVISION, AND THAT THE SURVEY DATA COMPLIES WITH ALL OF THE REQUIREMENTS OF CHAPTER 177, FLORIDA STATUTES.

Randell E. Fisher
RANDELL E. FISHER
FLORIDA SURVEYOR
CERTIFICATION NO. 1946

APPROVAL

STATE OF FLORIDA
COUNTY OF MARTIN
THIS PLAT IS HEREBY APPROVED BY THE UNDERSIGNED ON THE DATE OR DATES INDICATED.

DATE May 31, 1974 Kenneth J. Ferraris
COUNTY ENGINEER
DATE May 31, 1974 J. Leonard
PLANNING DIRECTOR
DATE May 31, 1974 Stephen T. Calvert
COUNTY ATTORNEY

CERTIFICATE OF OWNERSHIP

STATE OF FLORIDA
COUNTY OF MARTIN
WE, WILLIAM J. DARBY AND H. ANN DARBY, HIS WIFE, DO HEREBY CERTIFY THAT WE ARE THE OWNERS OF THE PROPERTY DESCRIBED HEREON.

William J. Darby H. Ann Darby
WILLIAM J. DARBY, HUSBAND H. ANN DARBY, WIFE

NOTE:
ALL BEARINGS REFER TO TRUE NORTH
ALL ROADS OPEN PRIOR TO NOV. 19, 1972.

RANDELL E. FISHER
SURVEYOR
STUART ♦ FLORIDA